

Word search

Can you find the words hidden in the grid?

A	T	H	C	K	O	R	K	E	Y
J	O	U	R	N	E	Y	E	P	C
A	N	E	E	S	W	L	A	L	R
T	C	D	A	R	L	A	R	A	E
T	E	E	T	H	I	N	I	N	S
A	N	U	U	S	H	A	R	K	H
C	K	A	R	L	U	T	E	T	U
K	T	E	E	P	L	A	E	O	K
W	D	A	R	K	N	H	U	N	T

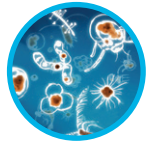
- | | | |
|----------|-------|--------|
| plankton | shark | hunt |
| journey | teeth | attack |
| creature | dark | |



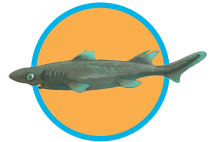
Letter jumble

Unscramble the letters and match the words to the pictures.

1 ameehhrmad



2 atgre hitwe



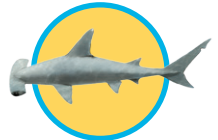
3 akgsnib akhrs



4 lnpankto



5 rfdwa elrantn



6 caeurerst



Build a sentence

Match the parts of the sentences from each column.

1 When great white sharks see a creature to eat,

they can look after themselves.

2 The shape of the hammerhead shark's head

they can swim very fast to catch it.

3 The dwarf lantern shark swims in the

helps it catch and hold creatures.

4 When shark pups are born,

dark sea where it can glow in the dark.

