



## Cast



**Narrator 1**



**Rose**



**Lily**



**Narrator 2**



**Patch**

## Non-speaking



**bird**



**cat**



**fairy**

Work with the children to allocate characters and prepare a short performance. Discuss the stage directions in advance and make sure the children understand how to follow the script.

**Narrator 1:**

Lily is a fairy and Rose is a fairy, too.  
Lily and Rose like helping their friends.

*(A bird appears.)*

**Narrator 2:**

Lily sees a bird.

**Lily:**

We can help that bird.

**Narrator 1:**

Lily and Rose help the bird.

*(A cat appears.)*

**Narrator 2:**

Rose sees a cat.

**Rose:**

We can help that cat.

**Narrator 1:**

Lily and Rose help the cat.

*(Patch arrives, disguised as a mouse.)*

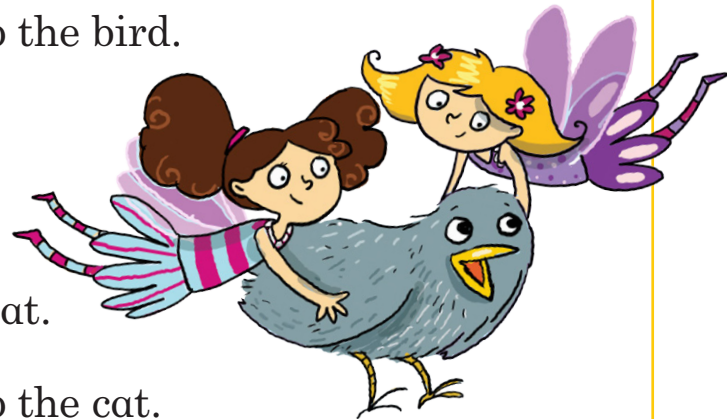
**Narrator 2:**

Lily sees a mouse.

**Lily:**

We can help that mouse.

*(Patch jumps up.)*



**Narrator 1:** It's not a mouse! It's Patch, a bad elf. Patch likes playing games with people.

*(Patch turns himself into a dog.)*

**Narrator 2:** Rose sees a dog.

**Rose:** We can help that dog.

**Narrator 1:** Lily and Rose help the dog.

**Narrator 2:** But it is not a dog. It is Patch the elf again! He is playing a game with Lily and Rose.

**Lily and Rose:** Please go, Patch! You are a bad elf!

*(A new fairy appears.)*

**Narrator 1:** Lily sees a fairy.

**Lily:** We can help that fairy.

**Rose:** That is not a fairy. That is Patch. Please go, Patch. You are a bad elf!

**Narrator 2:** They see the fairy, but they see Patch, too!

**Rose:** It IS a fairy.

**Lily (to the fairy):** We can help you.

**Narrator 1:** Lily and Rose help the fairy.

**Patch:** I can be a bird!

**Narrator 2:** And he helps the fairy, too.

**Narrator 1:** Lily and Rose are happy. Now, the fairy is their new friend. And Patch is their friend, too.